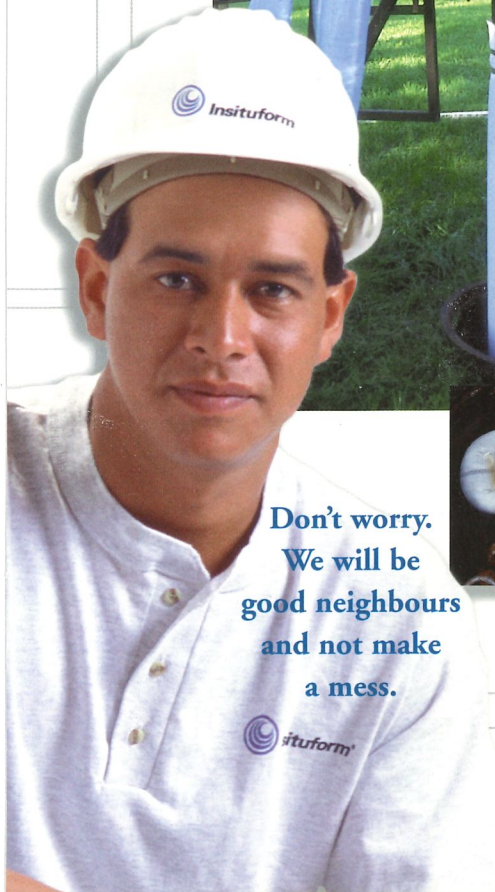
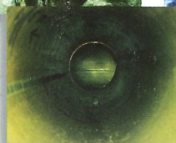




**Insituform®**

an AEGION® company

**We'll be your new neighbour  
but only for a day or so...**



**Don't worry.  
We will be  
good neighbours  
and not make  
a mess.**



**Insituform®**

an AEGION® company

**In the next few days, we will be in the  
neighbourhood reconstructing certain  
sewer pipes in need of repair.**

Insituform is under contract by your local government. The Insituform® process repairs pipes without digging up your neighbourhood. This helps to preserve your property and minimize any inconveniences.

Please bear with us as we repair your sewer system. We apologize for any equipment noise which may be created.

While the work is being performed, your sewer service connection will be temporarily sealed off (see Figure 1). **We need your cooperation to avoid backup of sewer water into your residence or business by preventing water from escaping through any drain during the specified time period.**

- ① Do not wash clothes or dishes.**
- ② Do not take showers or baths.**
- ③ Do not flush toilets.**
- ④ Do not operate sump pumps which are connected to the sewer system.**

If any problem occurs with your sewer service during this rehabilitation process, please visit one of our on-site representatives. If you have any questions after completion of the project, please call the local number listed below, not a plumber.

**Insituform is sending this handout to provide  
advance notice before beginning actual work.  
Please do not use water during the hours of:**

\_\_\_\_\_ to \_\_\_\_\_ on \_\_\_\_\_  
Day and Date

\_\_\_\_\_ Phone No.

*Thank you for your cooperation.  
We have enjoyed being your neighbour—if only for a day.*

DOC ID: COR/FRM-OPR-10 EFF. DATE: 03/01/01

APPROVAL: CO. MGMT. REP: ON FILE

Revised 7/01

© 1999 Insituform Technologies®, Inc.

**CONSTRUCTION  
NOTICE**

**CONSTRUCTION  
NOTICE**



## How This Work Affects You...

Insituform has been chosen by your local government to rehabilitate your sewers. Used worldwide for 30 years, our product is proven and reliable. The Insituform® process is the most widely used trenchless method for restoring full structural integrity to, and removing infiltration from, underground pipes.

As sewers age, they deteriorate in many different ways. Cracks appear, joints separate and roots penetrate. Infiltration through these cracks and joints creates external voids, accelerates structural deterioration and can overload collection systems and treatment facilities.

The Insituform method of sewer repair results in a seamless, jointless "pipe-within-a-pipe" creating a smooth, continuous inner surface which usually increases flow capacity. We typically complete installations in a single day, using robotic methods to restore active house connections from within the pipe. This quick and non-disruptive process allows our crews to work safely and efficiently.

*We thank you for your cooperation, as requested on the front, and are glad to serve your community.*

## Typical Cross Section Sanitary Sewer at Service Connection

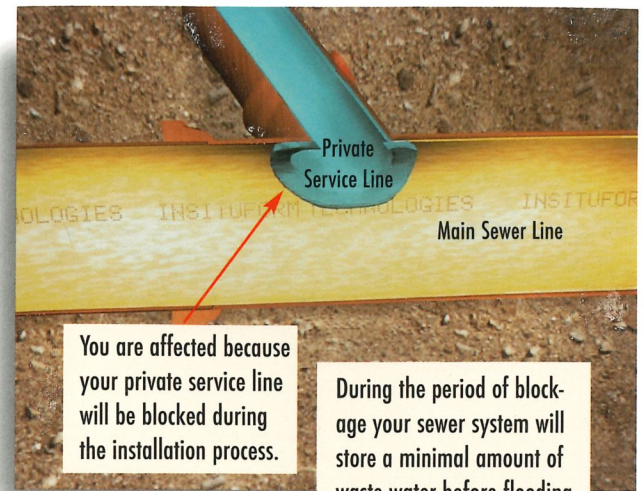
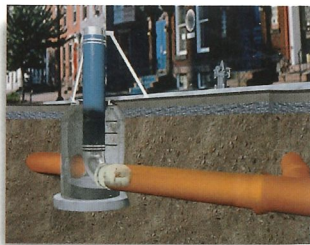


Figure 1 (After Rehabilitation)

*Insituform® is  
a method of  
repairing sewers  
without disrupting  
your neighbourhood.*

## The Installation Process



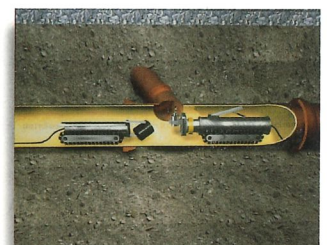
- 1 The resin-filled Insituform® tube is inverted (turned inside out) through our patented Controlled Head Inversion Process unit into a deteriorated pipe.



- 2 The tube is installed by inversion into the host pipe using water or air pressure.



- 3 Following inversion, the resin is cured using hot water or steam.



- 4 Service laterals are restored internally. The finished Insituform® pipe is inspected and tested.



# CONSTRUCTION NOTICE

# CONSTRUCTION NOTICE